

FCPF – Technical Advisory Panel

TAP Summary Report: Cote d'Ivoire

TAP team:

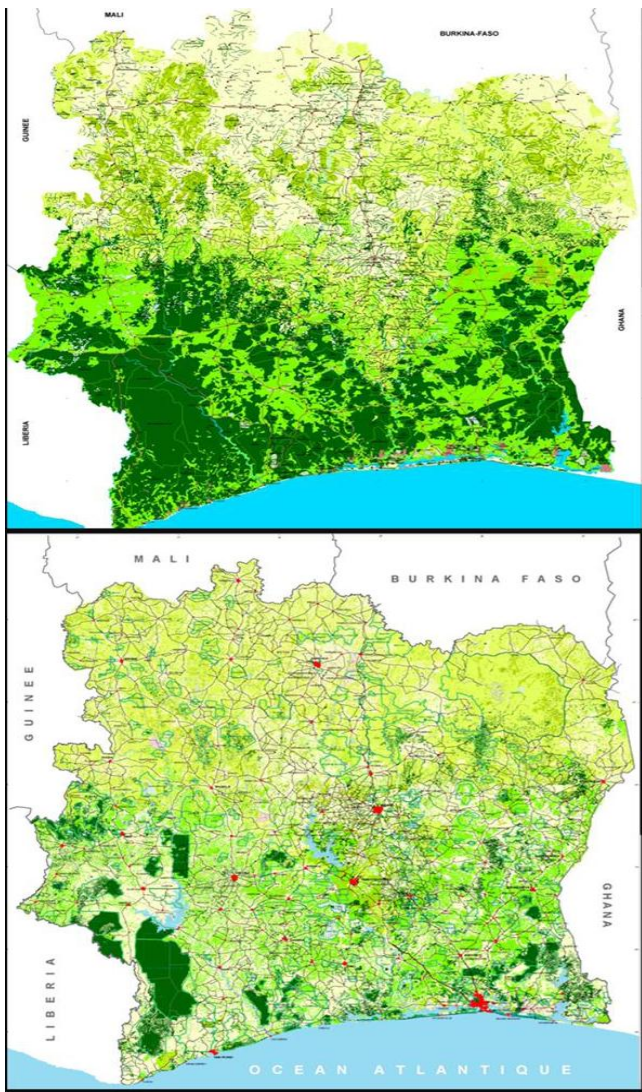
Trinto Mugangu, Stephen Cobb
and 6 other reviewers



16th FCPF Participants Committee Meeting
Geneva, Switzerland
December 2013

**FOREST
CARBON
PARTNERSHIP
FACILITY**

Cote d'Ivoire: country context



- Population
 - 21.9 m (INS, 2012)
 - Growth rate 3.6% pa (1988-1998)
- Rural population
 - 56% (1998)
- Forest cover
 - 10.4 m ha in 1969 (32.7% of total land area)
 - 3.1 m ha in 2004
- Forestry as % GDP
 - < 1% (INS, 2012)

Cote d'Ivoire: strengths of the R-PP

- All aspects of Component 1 were improved following our recommendations: representation of civil society and marginalised groups on committees, chairmanship, communications, stakeholder engagement and improved transparency.
- Component 2 started with a really honest analysis of the causes of D and D, and after our comments that the resultant strategy was unrealistic, a more coherent two-tiered strategic approach has been devised, that more clearly acknowledges the importance of a sophisticated agricultural sector, that dominates 21st century land-use.
- Component 3 was not, in our view, going to work, at least in part because of a long gap in the recent data record. A thoroughly revised, step-wise approach has been developed, drawing on a wider mix of participating institutions and an inclusive approach to different data sets
- A new and ambitious national forest surveillance system has been proposed in Component 4, that is dependent on good image interpretation, with suitable ground-truth work
- The budget and the M and E systems proposed are thoughtful and realistic, even if the scope of the overall programme may still be somewhat overambitious

Cote d'Ivoire: Standards table

Components	Draft R-PP submitted for PC16 (September 2013)	Revised R-PP submitted for PC16 (8 November 2013)
1a	Standard largely met	Standard met
1b	Standard largely met	Standard met
1c	Standard partially met	Standard met
2a	Standard largely met	Standard met
2b	Standard not met	Standard met
2c	Standard largely met	Standard met
2d	Standard largely met	Standard met
3	Standard not met	Standard largely met
4a	Standard partially met	Standard largely met
4b	Standard partially met	Standard met
5	Standard partially met	Standard met
6	Standard partially met	Standard met

Cote d'Ivoire: areas needing further work

- To bring Component 3 up to standard, an organogram and a workplan should be developed to clarify the interlinkages and roles of the many institutions to be involved in data collection, maps, modeling and REL and RF determination
- The SNSF (*Système National de Surveillance des Forêts*) is so ambitious, that there is a need to show what alternative approach could be adopted if the SNSF cannot be fully implemented (Component 4a)

Cote d'Ivoire: concluding remarks

This R-PP is very close to being of adequate standard throughout. None of the improvements referred to above would require more than a modest amount of work to be incorporated into the R-PP.

Cote d'Ivoire should be congratulated on its considerable efforts in preparing its R-PP, under the difficult circumstances that the country has been going through. The TAP wishes to record what a pleasure it has been working with the Cote d'Ivoire team, however brief have been our exchanges.